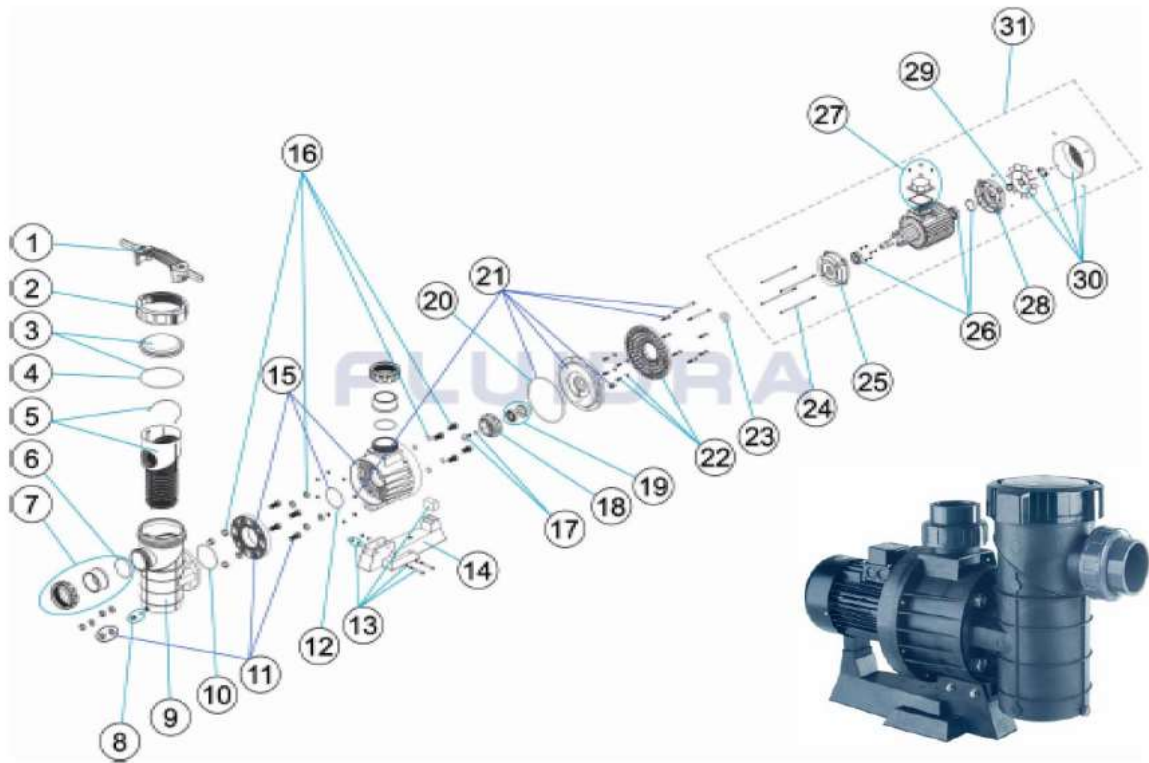


CODE 08003, 08004, 08005  
DESCRIPTION MAXIM PUMP

Effective on 1 March 2020



No.	Code.	Description	Pack	QTY/Pack
1	4405010379	KEY FOR PREFILTER NUT	1	1
2	4404180102	THREADED LID COLLAR	1	1
3	4405010302	PRE-FILTER COVER	1	1
4	4405010373	O' RING D 192X5	1	2
5	4405010304	PRE-FILTER BASKET	1	1
6	4405010375	SUCTION / RETURN GASKETS	1	2
7	4405010306	D.90 UNION FITTINGS	1	1
	4405010764	3" UNION FITTINGS	1	1
8	4404121107	PLUG 1/4'	1	2
9	4405040701	PRE-FILTER 8L	1	1
10	4405010377	O' RING D 124X3,5	1	2
11	4405010380	FLANGE FIXING + SCREWS	1	1
12	4405010376	O' RING D 100X4	1	2
13	4405010313	PUMP BASE FITTINGS <=4,5 HP	1	1
	4405010314	PUMP BASE FITTINGS 5,5 HP	1	1
14	4405010315	PUMP BASE	1	1
15	4405010307	PUMP BODY 3,5 HP	1	1
	4405010308	PUMP BODY 4,5 HP	1	1
	4405010309	PUMP BODY 5,5 HP	1	1
16	4405010311	BACK PLATE SCREWS	1	1
17	4405010338	IMPELLER COVER	1	2
18	4405010323	IMPELLER 3,5 HP III 50 HZ	1	1
	4405010765	IMPELLER 3,5 HP III 60 HZ	1	1
	4405010324	IMPELLER 4,5 HP III 50 HZ	1	1
	4405030126	IMPELLER 4,5 HP 60 HZ	1	1
	4405010325	IMPELLER 5,5 HP III 50 HZ	1	1
	4405010766	IMPELLER 5,5 HP III 60 HZ	1	1
19	4405010322	MECHANICAL SEAL	1	1
20	4405010378	O' RING D 226X6	1	1
21	4405010334	MECHANICAL SEAL PLATE 3,5 HP	1	1
	4405010335	MECHANICAL SEAL PLATE 4,5 - 5,5 HP	1	1
22	4405010332	MOTOR CLAMP 3,5 HP	1	1
	4405010333	MOTOR CLAMP 4,5 - 5,5 HP	1	1
23	4405010374	DEFLECTOR WASHER 24X50X6 4HP	1	2
24	4405010361	MOTOR TIES 3,5 HP VAR.	1	1
	4405010362	MOTOR TIES 4,5-5,5 HP VAR.	1	1
25	4405010369	FRONT MOTOR COVER 2,5-3 HP (BONORA)	1	1
	4405010381	FRONT MOTOR COVER 2,5-3 HP (VERNIS)	1	1
	4405030121	FRONT MOTOR COVER 4,5-5,5 HP	1	1
26	4405010171	BEARINGS ASSEMBLY 6205 2RS 3,5HP	1	1
	4405010342	MOTOR BEARINGS 5,5 HP MERC.	1	1
27	4405010545	CONNECTION BOX ASSEMBLY 3,5 HP (VERNIS)	1	1
	4405010157	TERMINAL BOX ASSEMBLY C. 80-90 III	1	1
	4405030119	CONNECTION BOX ASSEMBLY 2,5-3-4,5 HP (BON-	1	1
	4405030119	CONNECTION BOX ASSEMBLY 2,5-3-4,5 HP (BON	1	1
28	4405010367	REAR MOTOR COVER 3,5 HP (BONORA)	1	1
	4405010382	REAR MOTOR COVER 2,5-3-3,5 HP (VERNIS)	1	1
	4405030117	REAR MOTOR COVER 4,5-5,5 HP	1	1
29	4405010176	V-RINGS VA-2,5 - 3 HP II	1	1
	4405010571	V-RINGS VA-30	1	1
30	4405010383	FAN COVER ASSEMBLY 3,5 (VERNIS)	1	1
	4405010384	FAN COVER ASSEMBLY 4,5-5,5 HP	1	1
31	25493R0375	MOTOR 3,5 HP III	1	1
	25494R0375	MOTOR 4,5 HP III	1	1
	25495R0375	MOTOR 5,5 HP III	1	1